

Reverie Connect Setup Instructions (Onboard)

To set up Reverie Connect voice activation to operate your power base, you must have the **Reverie Nightstand™ app** downloaded to a smart device (phone or tablet). The app can be downloaded in the App Store for Apple devices and the Google Play store for Android devices.



Reverie Connect Profile

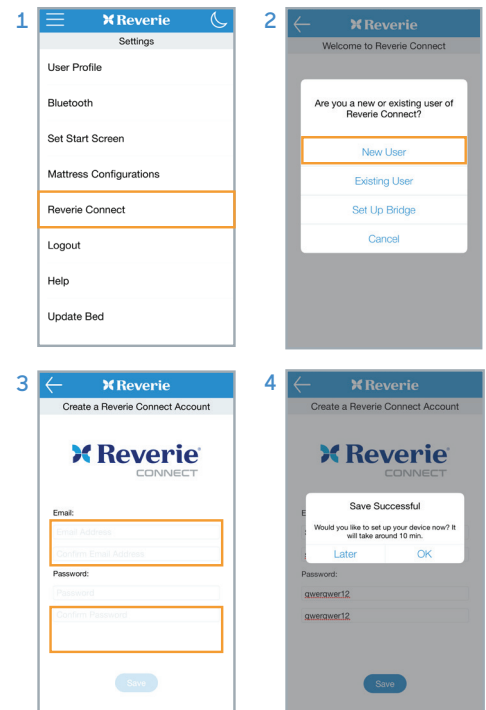
To begin setup, open your Nightstand app.

You will need to create a Reverie Connect profile or sign into an existing profile. Follow the steps below.

Create New Reverie Connect Profile

Follow these steps if you have never created a Reverie Connect profile before. This is a different profile from the normal Reverie Nightstand profile that is used to log into the app.

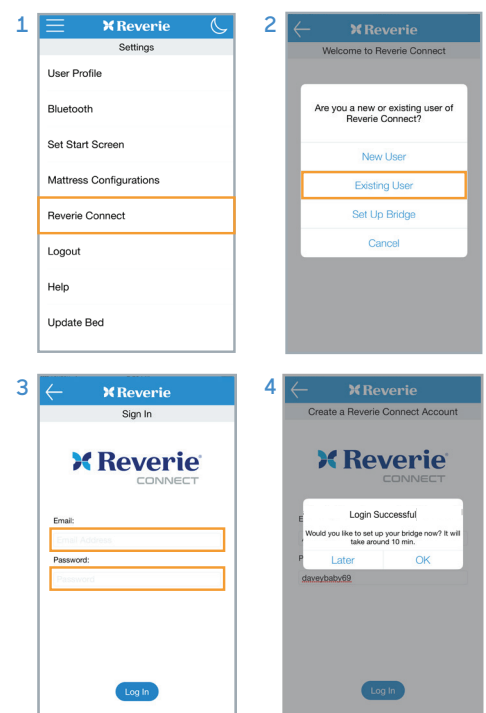
1. Go to the Settings menu and tap "Reverie Connect."
2. To create your Reverie Connect profile, tap "New User."
3. Type in your email address twice, making sure that it is correct. Then, create a password that is easy to remember. **You will need to remember both of these when installing the skill or action for Amazon Alexa or Google Home respectively.** After typing into each section, make sure to tap "Return" on the keyboard.
4. After a loading screen, you should be notified that the profile creation was successful, and you will be asked if you want to set up a device. Tap "OK" if you are ready to set up your Reverie Connect device now, or "Later" if you want to wait. If you're ready to set the device up, follow the steps under "Set up Reverie Connect Device." If login is unsuccessful, a popup will let you know. Check your internet connection, username, and password, and try again.



Log into Existing Reverie Connect Profile

Follow these steps if you have created a Reverie Connect profile before, and want to make sure that you are logged into your profile. This is a different profile from the normal Reverie Nightstand profile that is used to log into the app.

1. Go to the Settings menu and tap "Reverie Connect."
2. To create your Reverie Connect profile, tap "Existing User."
3. Type in your Reverie Connect profile email address and password. After typing into each section, make sure to tap "Return" on the keyboard.
4. After a loading screen, you should be notified that the login was successful, and you will be asked if you want to set up a device. Tap "OK" if you are ready to set up your Reverie Connect device now, or "Later" if you want to wait. If you're ready to set the device up, follow the steps under "Set up Reverie Connect Device." If login was unsuccessful, a popup will let you know. Check your internet connection, username, and password, and try again.



Set up a Reverie Connect Device

Your Reverie Connect device needs to connect to your home's WiFi network before use. Follow the steps below.

Reverie Connect Onboard Device

1. Tap the check mark circle by "RCC Control Box" or "Wired Bridge", then tap "Continue."
2. All detected onboard Reverie Connect Compatible devices in the house will show up here. Tap one to begin configuration.
3. You should now get a popup saying that you are connected to the device, as well as a confirmation that the device ID is the same as the one listed on the control box itself. Tap "Next." If the ID shown on the last line does not match the ID on the control box or law tag of the device you want to configure, tap "Disconnect" and select another one.
4. Tap "Select WiFi Network" and a scroll wheel will pop up showing all of the available WiFi networks. If the list is blank, tap cancel on the popup and try again, because the list needs to be refreshed. Select your WiFi network and tap "OK". Then enter your WiFi password. If you have a power base with tilt functionality like the R650 or R600 make sure that the "Dual Tilt" switch is green (meaning it is selected). Tap "Next."
5. The device is now set up to communicate with your WiFi network, and has been added to your account. The screen will show a loading screen, and then a notification that setup has been completed. You now have to complete setup in the Amazon Alexa app or Google Assistant app to install the Reverie Connect skill (Amazon) or action (Google). During this setup, you will need your Reverie Connect Profile email address and password. You can find the Amazon Alexa or Google Assistant setup instructions by following the appropriate link below:

<https://www.amazon.com/gp/help/customer/display.html?no-deld=201848700>

<https://support.google.com/googlenest/answer/9159862?co=GE-NIE.Platform%3DAndroid&hl=en>

*This is only for power bases that have tilt functionality like the R650 or R600.

